

KMM Möbel

COLORFUL FLOORS & HEALTHY LIFE

LVT/WPC/SPC FLOOR

OAK/BIRCH/MAPLE/WALNUT

STONE/CARPET

RESISTANT TO SCRATCHES, MARKS, AND STAINS

FLOOR DESIGNED TO MEET TODAY'S DEMANDS

NOT ONLY BEAUTIFUL BUT ALSO EASY TO KEEP CLEAN

THE MOST TRUSTED FLOORING SUPPLIERS IN THE BUSINESS

MYRIAD OF POSSIBILITIES TO HELP TRANSFORM YOUR HOUSE

**KMM
MÖBEL**

Hotelbedarf

**KMM Gmbh
Friedrichstr 92
68199 Mannheim
Fon 06214006461
Fax 062140068743**

**Email info@kmm-gruppe.de
www.kmm-gruppe.de**



- ✓ UV Resistant
- ✓ Scratch Resistant
- ✓ Stain Resistant
- ✓ Hypoallergenic
- ✓ Mildew Resistant
- ✓ Fire Resistant
- ✓ Slip Resistant
- ✓ Fade Resistant
- ✓ Non-Toxic



Helps protect against stains, scuffs & scratches

Resists rips, tear & more

Easy to clean= more time to enjoy your life

Water-resistant-perfect for any room

AWESOME COLLECTIONS ON OUR FLOORS

transform any room with gorgeously realistic and durable designs



1. Dry Backing (Glue Down Vinyl Plank)

Glue down PVC plank floor thickness from 1.5-3.0

2. Vinyl Locking (Click System)

Unilin easy locking system Plus German & Japanese brand slotting machines to ensure quality.

3. Loose Lay

No glue or adhesives necessary, No locking system required, No special tools needed for installation. Simply lay it down to transform any room instantly and dramatically

4. WPC Floor (Wood Plastic Composite)

Composite vinyl floor combines the resilience of LVT and stability of wood composite core with Unilin click system.

5. SPC Floor (Rigid Core Products)

Newest technology on Rigid core greatly enhances the floor's stability performance which then allows under floor heating application.

6. SPC Floor Plus

Upgrade manufacturing technique composites SPC rigid core between two LVT layers to enhance the soft touch.

Dry Backing (Glue Down Vinyl Plank)

Realistic design inspired by nature featuring high definition printing and realistic color



- 1 UV Coating** : protects the product and enables easy cleaning and care.
- 2 Wear layer** : guarantees high durability and allows versatile application installations.
- 3 Decor film** : offers multiple and unique product designs.
- 4 Base layer** : Increases elasticity and stability for a soft touch.
- 5 Backing** : Helps with balance and optimal installation with a waffle-backing texture.



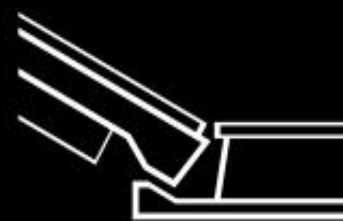
LVT-Dry Backing			
Size		Thickness(mm)	Wear Layer(mm)
6''*36''	152.4mm*914.4mm	1.5mm 2.0mm 3.0mm	0.1mm 0.2mm 0.3mm
7''*48''	177.8mm*1219.2mm		
12''*12''	304.8mm*304.8mm		
24''*24''	609.6mm*609.6mm		

Vinyl Locking (Click System)

Premium construction includes two core layers of virgin PVC and a fiberglass inner-layer, all topped with a durable wear layer and UV surface finish. Locking system is precision engineered with the most advanced technology possible to ensure connecting quality.



- 1 UV Coating** : protects the product and enables easy cleaning and care.
- 2 Wear layer** : guarantees high durability and allows versatile application installations.
- 3 Decor film** : offers multiple and unique product designs.
- 4 Base layer with fiberglass** : Improves product stability and increases strength while offering optimal indentation characteristics.
- 5 Backing** : compensates for tension and allows for increased stability.
- 6 Click system** : Allows easy and quick installation without glue.



Locking System

LVT-Click System			
Size		Thickness(mm)	Wear Layer(mm)
6''*36''	152.4mm*914.4mm	4mm 5mm	0.3mm
7''*48''	177.8mm*1219.2mm		0.5mm
			0.7mm

What is SPC flooring ?

SPC Flooring is the newest generation of floorcovering featuring: enhanced stability, high performance, 100% waterproof, high-density solid core, and indentation resistance.

SPC can be easily installed on a variety of floor bases including concrete or existing vinyl flooring. SPC is completely formaldehyde-free and uses components safe for residential and commercial installations.



6"

36"



7"

48"

SPC Flooring, also known as Rigid Core LVT, is an upgrade and improvement of traditional Luxury Vinyl Tile (LVT). The primary components of SPC are natural limestone powder, polyvinyl chloride, and a stabilizer. The proper ratios result in a stable, rigid composite material.

Advantages :

- 1) High-density rigid core for increased strength compared to traditional LVT flooring,
- 2) 100% waterproof, fire-retardant, and easily installed over existing flooring.
- 3) Extreme stability, with only minor expansion/shrinking (0.01%) compared to LVT, WPC, or Laminate flooring.
- 4) No curling even in high-temperature environments.
- 5) Glue-free installation with improved click-and-lock system.
- 6) Safe and sustainable by eliminating formaldehyde.
- 7) Best-in-class indentation resistance.

Underlayment Introduction



Cork

This underlayment is made of natural cork, it feels soft and warm underfoot.



IXPE/EVA Foam

This underlayment offers good foot feeling and anti-noise, it's also 100% waterproof.

Surface Treatment



o Wood grain



o Deep embossed



o Handscratch

Extensive application

Home | Hotel | School | Hospital | Mall | Office building





TC112



TC114



TC326G



TC329A



TC124



TC130



TC389A



TC394G



TC140C



TC143C



TC395B



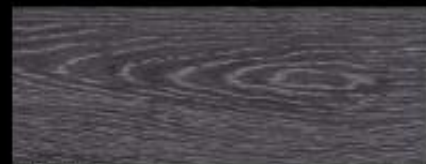
TC302E



TC149E



TC150



TC417H



TC419B



TC150B



TC154A



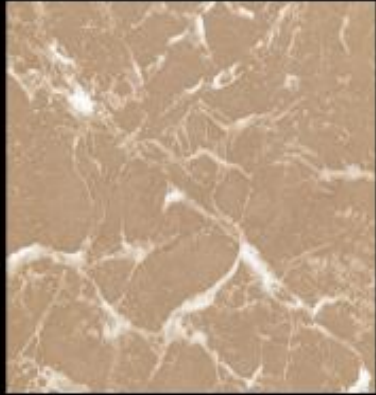
TC166B



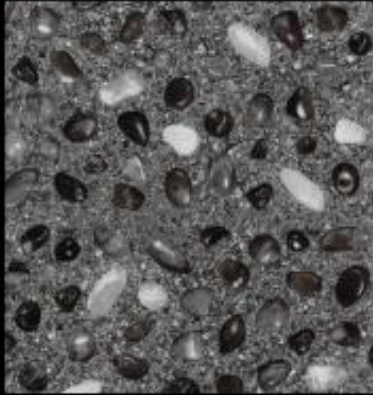
TC231



These printed patterns can be different from real products in colors and texture. Samples will also be provided for your evolution.



TC016-1



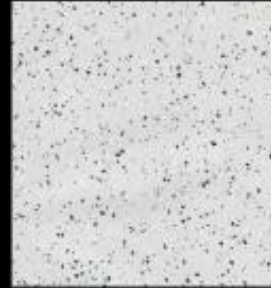
TC058-1



TC121



TC191-2



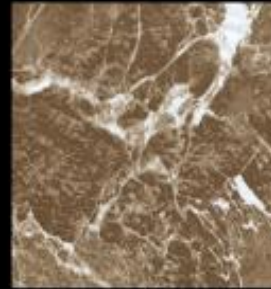
TC001-4



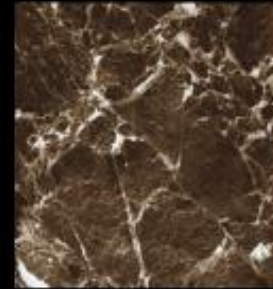
TC003-1



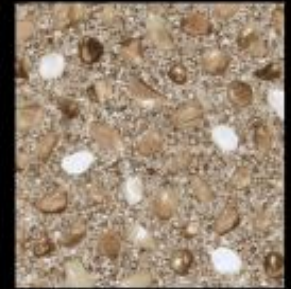
TC004-4



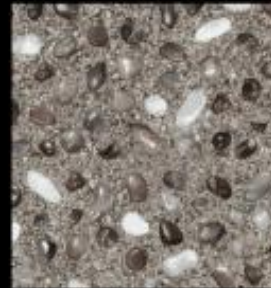
TC016



TC017



TC058



TC058-5



TC149-7



TC183-1

These printed patterns can be different from real products in colors and texture. Samples will also be provided for your evaluation.